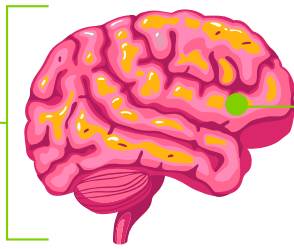


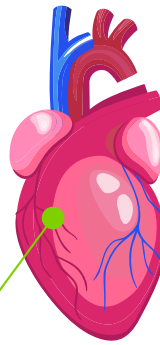
# CARDIOVASCULAR DISEASE: WHAT IS IT?

It can affect

**THE BRAIN**  
Stroke (CVA), etc.



**THE CORONARY ARTERIES**  
Heart attack, angina, etc.



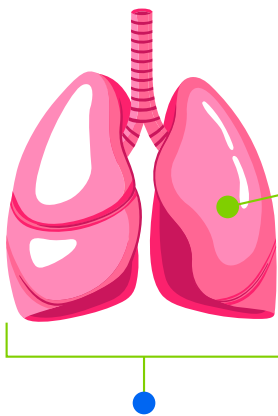
**THE HEART MUSCLE**  
Heart failure, cardiomyopathy, etc.

**THE ELECTRIC TISSUE THAT ENABLES THE HEART TO CONTRACT**

Heart rhythm disturbances: too slow or too fast, auricular or ventricular extrasystoles, atrial fibrillation, ventricular fibrillation, and so on.

**THE HEART VALVES**  
Narrowing, leakage, infection, etc.

**THE AORTA**  
Dissection, aneurysm, etc.



**THE PULMONARY ARTERIES**  
Pulmonary embolism, etc.

**THE ARTERIES IN THE LEGS, DIGESTIVE SYSTEM, NECK**  
Bowel infarction, cervical/lower limb arteriopathy, etc.



Agir pour  
le Cœur  
des Femmes

Women's Cardiovascular Healthcare Foundation

[www.agirpourlecoeurdesfemmes.com](http://www.agirpourlecoeurdesfemmes.com)